

Universal Terminal Line Expansion

- Features and Benefits
- Price Sheets
- Frequently Asked Questions

Introduction

There have been (18) new items added to the current Universal Terminal portfolio. They include (3) two conductor single port (“keyhole”) lugs, (6) single conductor anti-rotational lugs, and (9) six and eight conductor lugs. The additional items supplement the current offering by providing customers with further flexibility when selecting a connector to terminate conductors in power circuits.

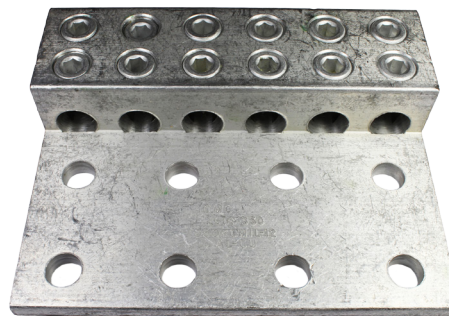
All 18 items are manufactured by CMC and have been included in their offering for a number of years. CMC has been successful with these particular items in their utility and OEM markets. The “keyhole” lugs offer a higher level of flexibility over one conductor single port lugs, the anti-rotational lugs prevent the lugs from turning during installation and helps prevent loosening when subjected to vibration, and the six and eight conductor lugs allow more conductors to be installed with a single conductor than what had been currently offered.



Keyhole Lugs



Anti-Rotational Lugs



**6 Conductor Lug
(8 Conductor also available)**

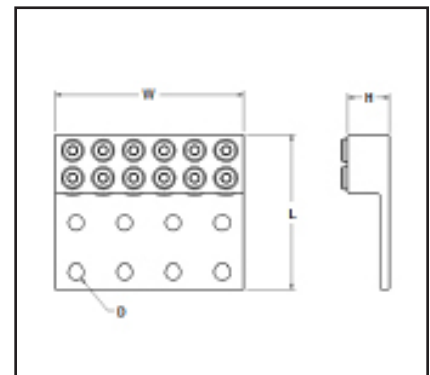
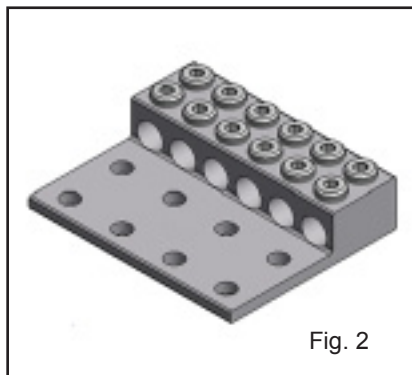
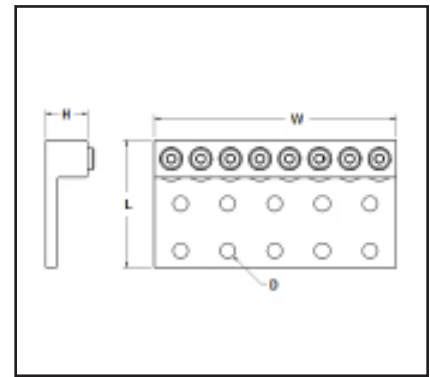
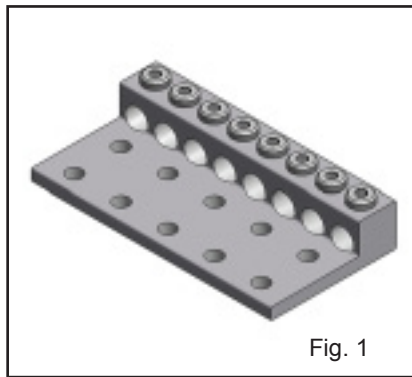
Customer Service 1-800-346-4175 | International 603-647-5299 | Canada 1-800-387-6487 | www.burndy.com

TYPES K6A-U, K8A-U

UNIVERSAL TERMINALS

(Six and Eight Conductor)
For Aluminum and
Copper Conductors

These dual-rated six and eight conductor lugs are constructed from high strength aluminum alloy and electro tin-plated to provide low contact resistance.



Catalog Number	Fig. No.	No. of Conductors	Wire Range (Aluminum or Copper)	# of Mounting Holes	Stud Hole Size	Spacing Between Holes	Length	Width	Height
K6A34U-8	1	6	#10 AWG - 500 kcmil	8	1/2"	1.75"	4.69	6.75	1.56
K8A34U-10	1	8	#10 AWG - 500 kcmil	10	1/2"	1.75"	4.69	8.75	1.56
KK6A31U-8	2	6	#12 AWG - 350 kcmil	8	1/2"	1.75"	5.31	6.75	1.50
KK8A31U-10	2	8	#12 AWG - 350 kcmil	10	1/2"	1.75"	5.31	8.75	1.50
KK6A34U-8	2	6	#10 AWG - 500 kcmil	8	1/2"	1.75"	5.56	6.75	1.50
KK8A34U-10	2	8	#10 AWG - 500 kcmil	10	1/2"	1.75"	5.56	8.75	1.50
KK8A39U-12	2	8	#2 AWG - 750 kcmil	12	1/2"	1.75"	5.94	10.50	1.63
KK6A44U-12	2	6	350 kcmil - 1000 kcmil	12	1/2"	1.75"	6.19	10.50	1.88
KK8A44U-14	2	8	350 kcmil - 1000 kcmil	14	1/2"	1.75"	6.19	12.25	1.88

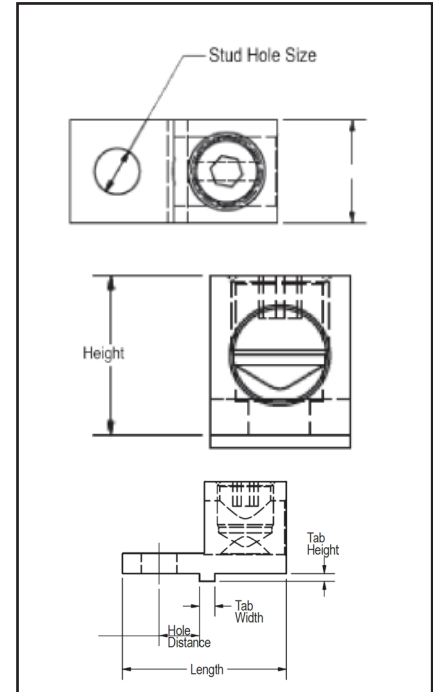
Blue highlighted items are industry standard and most frequently ordered.

TYPES KA-UAR

UNIVERSAL ANTI-ROTATIONAL TERMINALS

(One Conductor)
For Aluminum and Copper
Conductors

These dual-rated one-conductor lugs are constructed from high strength aluminum alloy and electro tin-plated to provide low contact resistance. These lugs also contain a bottom anti-turn tab.



AL9CU



Catalog Number	Wire Range Aluminum or Copper	Stud Hole Size	Length	Width	Height	Tab Height	Tab Width	Hole Distance	Recommended Tightening ▲ Torque (in-lb)
KA4UAR	14 AWG - 3 AWG	#10	0.99	0.49	0.55	0.06	0.12	0.22	45
KA25UAR	14 AWG - 1/0 AWG	1/4	1.47	0.63	0.78	0.06	0.12	0.50	50
KA26UAR	14 AWG - 2/0 AWG	1/4	1.20	0.60	0.78	0.13	0.12	0.30	120
KA30UAR	6 AWG - 300 kcmil	13/8	2.00	0.98	1.13	0.09	0.19	0.49	275
KA31UAR	6 AWG - 350 kcmil	5/16	1.91	1.00	1.13	0.125	0.19	0.50	275
KA36UAR	4 AWG - 600 kcmil	3/8	2.75	1.38	1.57	0.19	0.19	0.88	375

Listed torque values are for maximum conductor sizes accommodated. Consult UL486 Tables 7-4, 7-5, 7-6 for smaller conductor sizes.

Blue highlighted items are industry standard and most frequently ordered.

TYPES KA-U, KKA-U

UNIVERSAL TERMINAL

For Aluminum and Copper Conductors

These dual-rated one-conductor lugs are constructed from high strength aluminum alloy and electro tin-plated to provide low contact resistance.

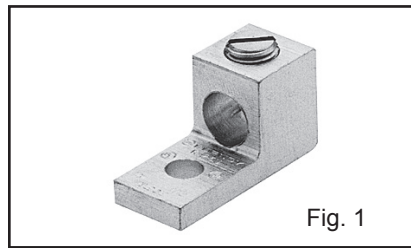


Fig. 1

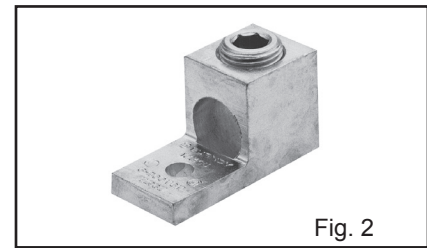


Fig. 2

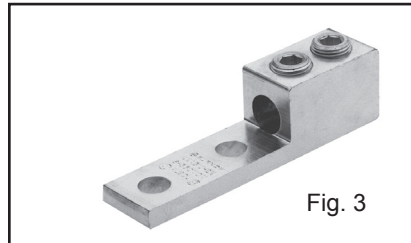


Fig. 3

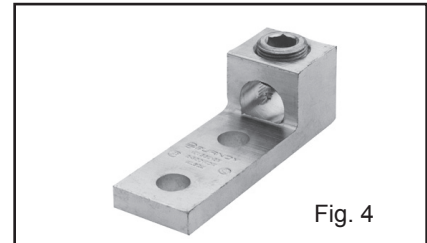
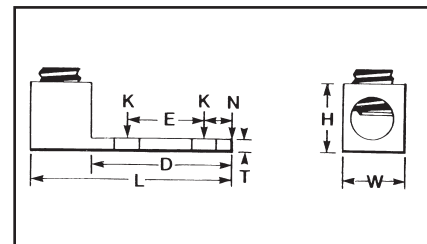


Fig. 4



Fig. 5



Catalog Number*	Fig. No.	Wire Range Aluminum or Copper	Stud Hole Size	D	L	N	** W	E	T	** H	Recommended Tightening ▲ Torque (in-lb)
KA6U	1	14 AWG-6 AWG	1/4	0.63	1.06	0.25	0.50	—	0.09	0.51	45
KA2U	1	14-2	1/4	0.63	1.16	0.31	0.50	—	0.10	0.56	50
KA25U	1	14 AWG-1/0	1/4	0.81	1.50	0.44	0.63	—	0.19	0.92	50
KA26U	2	6-2/0	1/4	0.81	1.47	0.45	0.63	—	0.19	0.80	120
KA29U	2	6-250	5/16	0.94	2.00	0.47	1.00	—	0.25	1.14	275
KA30U	2	6 AWG-300 kcmil	5/16	0.94	2.00	0.45	1.00	—	0.25	1.14	275
KA31U	2	6 AWG-350 kcmil	3/8	1.03	2.25	0.52	1.13	—	0.25	1.27	275
KA34U	2	4 AWG-500 kcmil	3/8	1.50	2.81	0.88	1.51	—	0.31	1.58	500
KA36U	2	2 AWG-600 kcmil	3/8	1.72	3.19	0.78	1.50	—	0.44	1.58	500
KA40U	2	300 kcmil-800 kcmil	1/2	1.85	3.50	0.81	1.75	—	0.50	1.95	550
KA44U	2	500 kcmil-1000 kcmil	1/2	1.69	3.50	0.88	1.75	—	0.50	1.95	550
KKA31U-2N	3	6 AWG-350 kcmil	1/2	3.16	5.50	0.63	1.25	1.75	0.38	1.52	275
KA36U-2N	4	2 AWG-600 kcmil	1/2	3.22	4.69	0.63	1.50	1.75	0.44	1.57	500
KA40U-2N	4	300 kcmil-800 kcmil	1/2	3.03	4.75	0.63	1.75	1.75	0.50	1.95	500
KA44U-2N	4	500 kcmil-1000 kcmil	1/2	3.03	4.75	0.63	1.75	1.75	0.50	1.95	550
† KA30226U	5	6 AWG - 300 kcmil or † (2) 4 AWG - 2/0 AWG	(2) 5/16	1.31	2.31	0.25	0.85	0.69	0.25	1.50	275
† KA36229U	5	4 AWG - 600 kcmil or † (2) 1/0 AWG - 250 kcmil	3/8	1.50	2.81	0.63	1.38	—	0.31	1.81	550
† KA39230U	5	2 AWG - 750 kcmil or † (2) 1/0 AWG - 300 kcmil	3/8	1.50	2.81	0.63	1.38	—	0.31	1.81	550

* "N" indicates NEMA standard stud holes.

† Conductors must be of equal size.

▲ Listed torque values are for maximum conductor sizes accommodated.

** Maximum dimension.

Consult UL486 Tables 7-4, 7-5, 7-6 for smaller conductor sizes.

Blue highlighted items are industry standard and most frequently ordered.